



Powerful Data Collection with Carlson SurvCE

Constantly being upgraded, SurvCE2.5+ includes six new and expanded Roding Routines: Template Grade Tables, Grade Staking, Multiple Centerline Routine, Dynamic Template Ditches, the display and staking of pipes in cross section, and Screen Selection of Sections from Polylines.

Here’s one of the newest aspects of Carlson SurvCE:

Now available for production! SurvCE 2.52 and newer can now read the GIS feature/attribute structure from a client’s Esri GIS geodatabase, collect additional survey-grade data to that schema, and write it back as ArcGIS compatible data in a single seamless workflow. No office software required!, along with an introductory discussion by Brent Jones of Esri about the new opportunities for surveyors in the GIS marketplace.

In addition, this new release features new stakeout commands for building extensions following alignments observed in the field and for building pad relocation by frontage and side-line offsets. The Advanced Occupating command allows for both resection and backsight averaging using least squares analysis on all types of backsight observation (angle only to towers, angle/distance to prisms, etc.).

Also new are the increased numbers of Instrument Drivers added for Total Stations and GPS receivers. These include: CST Berger, Foif, GeoMax, Hemisphere Crescent and Eclipse, Javad receivers, Leica Flexline, NavCom 2110, Ashtech ProMark 500 and ProFlex 500, CHC receivers X90 and X91, Sokkia GRX1 and Stonex S9 GNSS and Orion. Literally 100s of enhancements have been built into SurvCE2.5.

Carlson SurvCE is the first choice in data collection software with advanced, yet easy-to-use functionality:

- Get the software that supports a wide variety of equipment, old or new
- Enjoy excellent, free (and prompt) technical support
- Be heard - Carlson listens to its customers’ input for new features or drivers for all of its products

Carlson SurvCE combines advanced functionality, ease-of-use, and sheer capability to make it the first choice in data collection software. Carlson SurvCE is a complete data collection system for Real Time (RTK) GPS and Total Stations with in-field coordinate geometry. It supports the widest range of popular and new release RTK GPS and conventional/ robotic total stations.

FEATURES

<p>Easy to use</p> <ul style="list-style-type: none"> • Tab-Based MENU Structure. All commands are visible in each menu, preventing the need for Up-Down Arrow Keying to view options. <p>Enhanced graphics</p> <ul style="list-style-type: none"> • Collect points in the graphics mode. Points plot as they are shot in the field or entered. There is no need to switch between screens to view your points. <p>Read in LandXML</p> <ul style="list-style-type: none"> • Supports LandXML points, DTM, graphics, alignments, profiles and sections. <p>New Look</p> <ul style="list-style-type: none"> • SurvCE Version2 has a new colourful look. Icons have been standardized to create continuity throughout the product, while modernizing the user experience. <p>Angle Sets in Store Points</p> <ul style="list-style-type: none"> • SurvCE 2 allows users to “Configure” how each reading is measured with regard to direct and reverse options (Formerly know as SS/Trav). If direct and reverse readings are taken at the backsight, then any direct and reverse foresight will be considered an angle set and will be reduced accordingly. This eliminates the need to use a separate routine for angle sets. 	<p>Volumes</p> <ul style="list-style-type: none"> • SurvCE 2 can compute volumes between two surfaces, one surface and an elevation or simple stockpile volumes. Surfaces can be defined by graphical entities and points or by Carlson TIN files <p>Help</p> <ul style="list-style-type: none"> • The software has optional on-board help files. These files are the entire user manual and can be installed separately. Click on the SurvCE icon and select Help to get the help document that pertains to the current routine. <p>Levelling</p> <ul style="list-style-type: none"> • SurvCE 2 can be used to collect trigonometric level loops and digital level loops. Loops can be processed and adjusted on the device and all existing project coordinate points can be updated. <p>Station Equations</p> <ul style="list-style-type: none"> • SurvCE 2 supports station equations. <p>GPS Networks</p> <ul style="list-style-type: none"> • SurvCE 2 supports several GPS network protocols, such as NTRIP, TCP and UDP. <p>Localization</p>
--	---

Feature Coding

- SurvCE 2 can collect parallel lines using the offset horizontal and offset vertical line drawing commands and close a rectangle by three points using the rectangle command. In the settings section of Special Codes, the user can even auto compute and store the additional points at the line vertices that were created by the software.
- SurvCE 2 allows the user to code in numerous coding styles that may be defined by their office package.

Instrument Switching

- SurvCE 2 keeps track of every instrument completely separate. This includes all base stations, rovers and total stations, so that mixing equipment is easy. Simply configure your gear once and forget it. The instrument icon has been enhanced to allow you to switch between your current equipment.

Skew Angle Staking

- SurvCE 2 supports staking offsets on a skew angle and provides the option to stake offset intersections and bisectors at angle points and the radius or PI point of an arc without leaving the Stake Line/Arc routine.

Hot List

- The new Hot List lets users jump to the SurvCE 2 routines that previously had shortcuts without having to memorize key strokes. It also provides shortcut functionality to devices without keyboards.

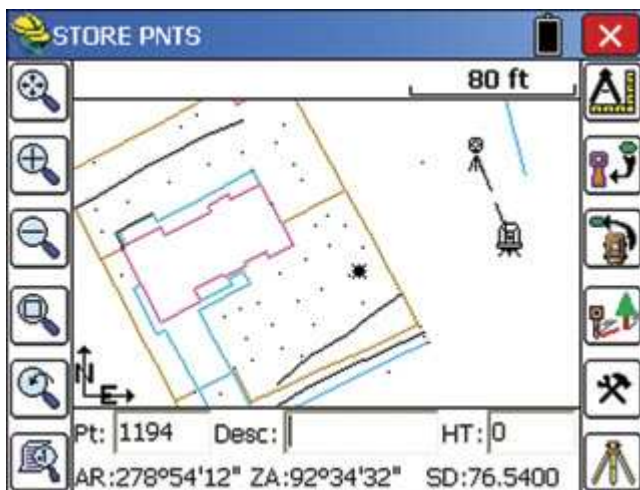
- The software supports an unlimited number of localization points. All project scale settings and coordinate system options have been centrally located in the localization dialog.

Job Settings

- SurvCE 2 has the option to use a template DXF file for new jobs so that all layers and colours are automatically created per your company standard.
- It has the option to auto-load cut sheets and control files from the previous job for those users that work on one site continuously
- SurvCE 2 has the ability to turn off the auto-descriptions in stakeout and completely customize how all stakeout routines behave
- Point Number by Interval –SurvCE 2 can interval the point ID by using the “Add to Next Pt ID” option. To number all points on the odd numbers, start at 1 and use 2 in this field.

Languages

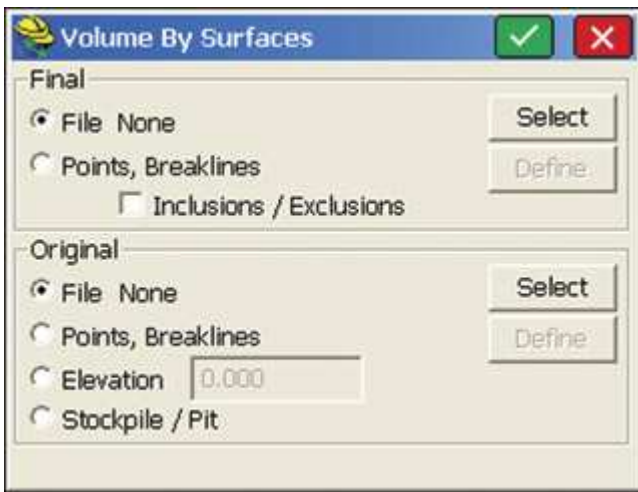
- In addition to English, SurvCE is available in 15 additional languages, rated following.
- Language translations prepared and endorsed by Carlson Software: Spanish, Portuguese
- Additional substantially complete language translations, actively updated: French, Hungarian, Simplified Chinese, Korean, Swedish, Turkish
- Additional partial or non-updated language translations available: Czech, Dutch, Finnish, German, Greek, Italian, Polish



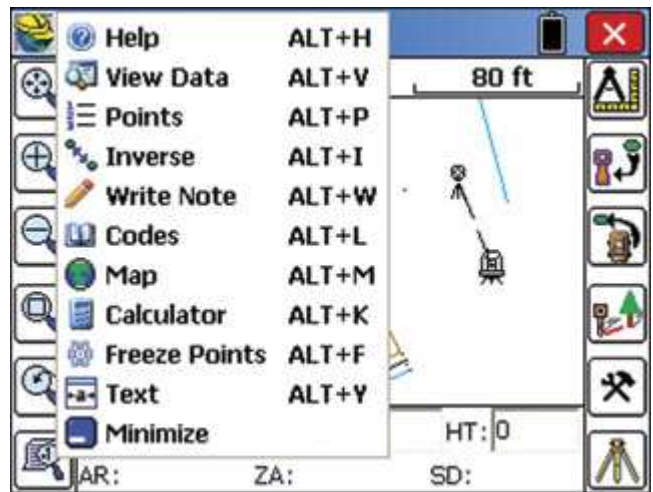
Collect points in the graphics mode.



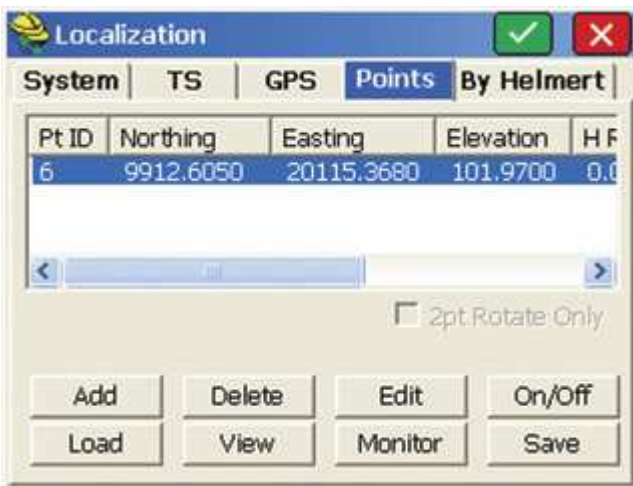
Tab based menu structure.



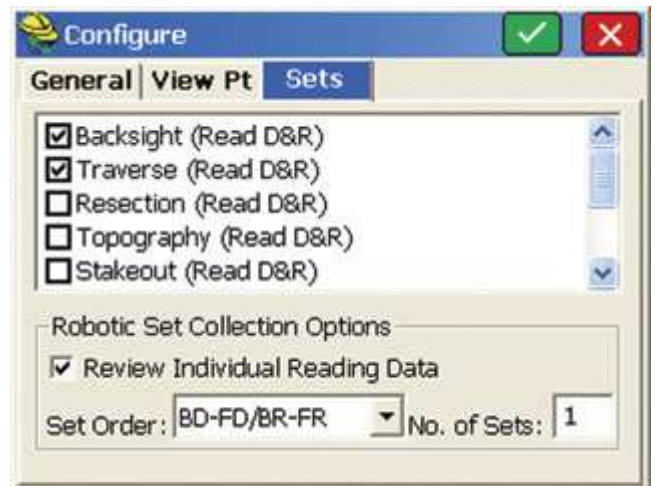
Compute volumes in SurvCE 2.



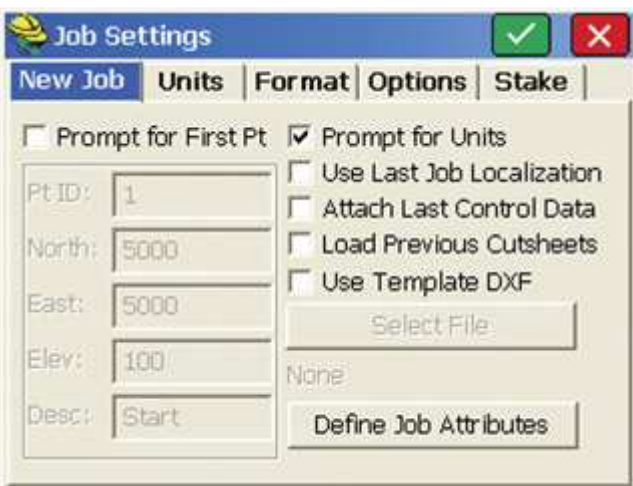
Hot List lets users jump to routines.



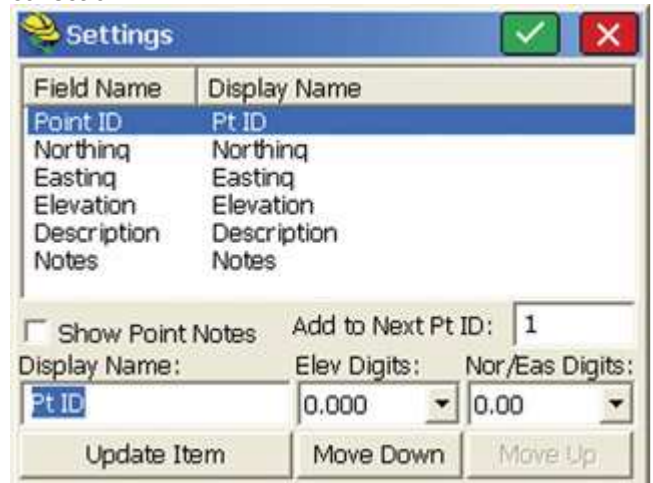
Supports an unlimited number of localization points.



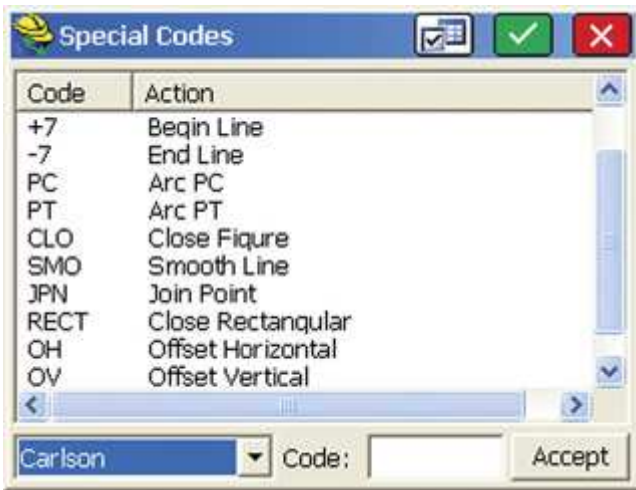
Angle Sets in Store Points – Faster, more efficient collection



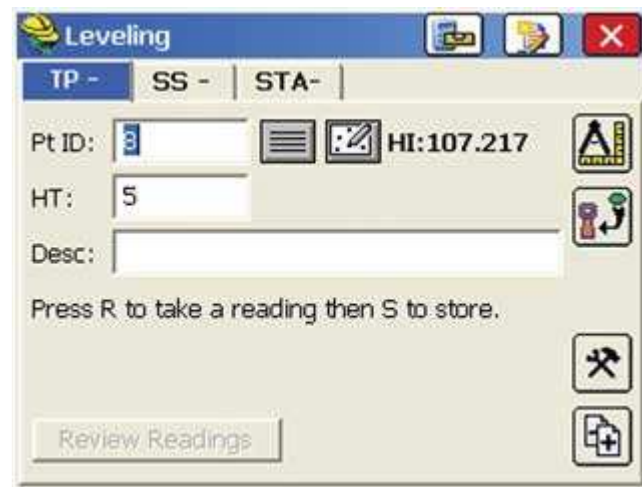
Job Settings – Customize layers, colours, cut sheets, descriptions and much more



Point Number by Interval – Advanced point ID controls.



Leveling – Collect and process trigonometric & digital level loops.



Feature Coding – Add numerous coding styles & functions.



Instrument Switching – SurvCE keeps track of every instrument, so switching equipment is fast and easy.



Help – Click to get the help document for the current routine.